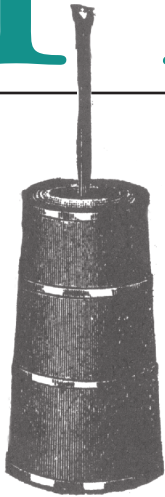


# Group Program Guide



Revised 9-2014

Additional information and resources for educators are available on our new website,  
[www.landbetweenthelakes.us/seendo/environmental-education/](http://www.landbetweenthelakes.us/seendo/environmental-education/)

**Where you can find:**

- The Group Program Guide and program correlations
- Pre- and post-trip activities for some Homeplace and Woodlands Nature Station programs (*will be posted soon*)
- Brandon Spring Group Center information and its educational opportunities
- Additional information about The Homeplace, Elk & Bison Prairie, Golden Pond Planetarium, and Woodlands Nature Station
- Links to other teaching resources for your classroom or group

# Our Day Use Facilities

## Woodlands Nature Station

This environmental education center communicates the relationship between people, past and present, and the area's natural resources. You will find a hub of activities featuring live animal and plant exhibits, hands-on discovery activities, hiking trails, and staff-led programs. Live animals include red wolves, a bald eagle, a bobcat, coyotes, deer, and a variety of raptors, snakes, and turtles.

## The Homeplace 1850 Living History Farm

Our living history farm recalls the lifestyles and customs of a family living between the Cumberland and Tennessee Rivers—the dominant features of this area. A setting of farm animals, antique furnishings, historic log buildings, and traditional activities re-creates a rich tradition of farming from the mid-19th century. Interpreters, dressed in period clothing, bring the farm to life as they demonstrate agricultural skills and work habits that changed the area's landscape.

## Golden Pond Planetarium

Located in the Golden Pond Visitor Center, the 82-seat planetarium offers a variety of astronomy programs for audiences of all ages. Visual effects projected onto the planetarium's 40-foot dome allow you to sail through our solar system or explore depths of a black hole.

## Elk & Bison Prairie

Enjoy watching elk, bison, and other wildlife species as you drive through a prairie that represents a landscape once typical of western Kentucky and Tennessee. Interpretive stops along the route tell the story of the land, vegetation, wildlife, and people who inhabited Kentucky's barrens.

For driving distance between attractions go to [www.landbetweenthelakes.us/visit/drive-times/](http://www.landbetweenthelakes.us/visit/drive-times/).

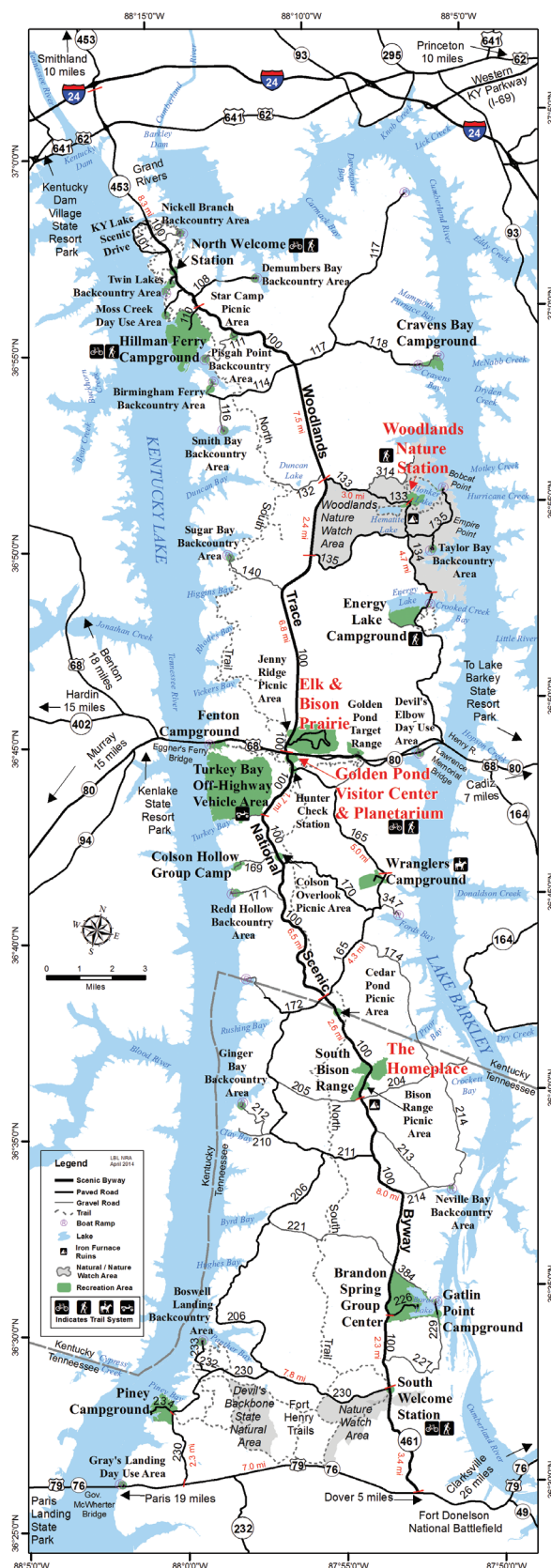
On your LBL field trip, consider exploring these sites, too!

- Hematite Lake trail and picnic area
- Center Furnace site and interpretive trail
- South Bison Range
- Great Western Furnace site
- Golden Pond Visitor Center—heritage exhibit and picnic area

Call 270-924-2020 for additional information about Scout Programs and Excursion Program Offerings, such as Canoe Trips, Guided Hikes, and Eagle Field Trips.

## Reservation Information

The following programs are offered to pre-scheduled groups throughout the operating season (March 1-November 30). Programs vary in length and differ in costs. During December, January, and February, programs are offered on a limited basis by reservation. We recommend you schedule your group at least one week in advance. Reservations are first-come, first-served basis. For reservations, cost, and other information, call our group scheduler at 270-924-2020, 8am – 4:30pm, Monday through Friday. Minimum group size is 10 paying participants.



## Brandon Spring Group Center

### Overnight Facility

Why turn around and head back to school just when your students are starting to really enjoy the learning opportunities LBL has to offer? With 128 beds, cafeteria, meeting rooms, recreational activities, and a full array of programs to complement your educational goals, Brandon Spring Group Center is the perfect companion to our day-use facilities.

Imagine the lights turning on in students' minds when they wade in a nearby creek to observe a crawfish in its natural habitat, learn to read a map and compass, and more.

These and countless other learning adventures await you and your students. Let our professional staff help you plan your 2-, 3-, or 4-day trip to LBL and the surrounding area. Give us a call at 270-924-2044 or email [lblinfo@fs.fed.us](mailto:lblinfo@fs.fed.us) to learn more about the total experience LBL has to offer. **Discounted rates are available during the winter months and for first-time groups.** Reservations are taken up to one year in advance.

### Brandon Spring Group Center Environmental Education Programs

**Stream Study** - Put on your get-wet shoes and prepare to explore the diversity of life found in a stream ecosystem! Your students will conduct a scientific investigation by collecting and identifying aquatic invertebrates using dip nets, discovery scopes, and field guides. As we wade through the ripples of Panther Creek, we'll discover the unique adaptations many aquatic organisms use for surviving in a constantly changing environment.

**Learning concepts:** Life cycles, metamorphosis, interdependence, adaptations, food chains, biodiversity.

**Orienteering** - Test your skills with a map and compass to navigate through the woods surrounding Brandon Spring. We'll study the parts of a compass, learn basic map-reading skills, and practice simple orienteering techniques. Then work together in small teams and use our new found knowledge, along with some coaching from our staff, to find our way through the forest. **Learning concepts:** Using geographic tools, identifying geographic features, critical thinking, decision-making skills, working in small groups.

**Pond Prowl** - Your students will explore life in a pond habitat and discover the diversity of aquatic invertebrates and amphibians that call wetlands their home. We'll examine the many adaptations organisms have for surviving in an aquatic environment, with dip nets, discovery scopes, and field guides. **Learning concepts:** Life cycle, metamorphosis, interdependence, adaptations, food chains, biodiversity.

**Challenge Course** - Through creative teamwork, your group will solve a series of challenges on our low-ropes course led by trained facilitators. See self-esteem and leadership skills grow while bringing the group together as an effective unit. This is a great time to strengthen friendships, build a team, and learn a variety of life skills as you complete each challenge. **Learning concepts:** Leadership, problem solving, sportsmanship, critical thinking, decision-making skills, teambuilding skills, communication.

**Animal Signs** - Get ready to explore and "track" many animals that call our forests and shorelines home! We'll discover signs of wildlife often left behind, and see why all of our animal neighbors are important for maintaining a healthy environment. We'll search the woods, the fields, and along the water's edge for those telltale signs of animals. **Learning concepts:** Interdependence, biodiversity, habitat needs, observation skills.

**Beaver Marsh Study** - Let's discover what life is like for a beaver and investigate an active beaver marsh! We'll "build-a-beaver" and study beaver's special adaptations up close, as well as examine why beavers are so important in our environment. Then hike to a nearby beaver marsh to explore and identify the unique signs made by these amazing animal engineers. **Learning concepts:** Interdependence, adaptations, habitat needs.

**Outdoor Survival** - It is always helpful to learn basic outdoor survival skills. Let's discover what to pack in a survival kit to take on a hike, and then head to the woods and build our own survival shelters using only items found in nature. Along with building debris huts, we will practice simple ways to start a safe campfire! **Learning concepts:** Critical thinking, decision-making skills, working in small groups.

## Brandon Spring Group Center, cont.

**Life on a Log** - What good are dead trees? This program investigates this question while we discuss life cycle of a tree and why trees are important. Students will search for decaying logs, and discover unique life found in and under these micro-habitats. We will collect a variety of organisms found on logs, identify them with field guides, and discover their unique adaptations for survival. **Learning concepts:** Life cycles, interdependence, adaptations, food chains

**Lake Study** - A time of exploration and discovery awaits your students on this pontoon boat excursion. As a team of scientists, we'll conduct a scientific investigation to determine the water quality of Bards Lake. We'll begin our investigation along the shoreline by collecting and identifying fish with a 45-foot seine net. Then we'll take to the water aboard our pontoon boat and conduct a variety of water quality tests. **Learning concepts:** Scientific inquiry, conducting investigations, interdependence

**Night Hike** - Are you ready to become nocturnal for a night? Explore the world of nocturnal creatures by taking a guided hike through the woods. We'll discover the unique adaptations that many nocturnal animals have for surviving in the nighttime world. See, smell, hear, touch, and taste like the animals of the night! **Learning concepts:** Adaptations, interdependence, habitat needs

**Night Flight** - It's a bird! It's a plane! No! It's... a bat?! We'll unravel some bat myths and discover just how beneficial these flying mammals are to our environment. Then, play our interactive echolocation game where you can be the bat!

**Learning concepts:** Interdependence, adaptations, food chains

**Astronomy** - Have you ever looked up at the stars and became lost with wonder? Learn the different constellations that make up the night sky and explore our solar system with some cosmic games that are out of this world! **Learning concepts:** Lunar cycle, planetary motions and size, constellations

**Other program topics** - for special requests include: Birds, Deer, Erosion, Insects, Predator/Prey Relationships, and Squirrels

## The Homeplace School Groups

### SELF-GUIDED TOUR OF THE FARM

*Pre-K through adult. \$3 per participant.*

Step back in time to the mid-19th century and stroll on your self-guided tour through a middle Tennessee yeoman class family farm. Farm activities change with the season. Your group can observe, ask questions, and occasionally lend a helping hand to Homeplace interpreters. This tour is available to **groups of 30 or less**, making it ideal for Home Educators and small groups.

### SHOW & TELL HISTORY

*All Ages. \$3 per participant.*

Discover what daily life on a mid-19th century farm was like by visiting with interpreters at various stops as you tour the farm. You will get a chance to talk about the different roles of people on the farm, discover some of the many uses for the crops and animals raised on the farm, and discover how heavily people depended on natural resources in their daily life.

### TOYS AND GAMES

*K through 2nd grade. \$3 per participant.*

What did children do for fun before the age of television and Playstation? Discover toys that were made at home and learn some games that taught the children skills while they played.

### CHILDREN'S CHORES

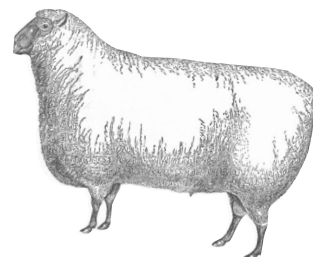
*K through 2nd grade. \$3 per participant.*

No time to play until you finish your chores. Who hasn't heard that before? For children of the mid-19th century, this was a necessity. Not finishing their chores meant the family might go without water or firewood. Help us finish up the day's chores!

### SPINNING WOOL

*K through 12th grade. \$3 per participant.*

Discover the process of how wool is turned into yarn. There are many steps and skills necessary to make yarn; including shearing, cleaning, carding, and spinning. Watch these demonstrations and try your hand at spinning.



## **The Homeplace, cont.**

### **A WALK WITH THE ANIMALS: ENDANGERED ANIMALS?**

*3rd through 12th grade. \$3 per participant.*

When you think of endangered animals, what comes to your mind? Pandas, spotted owls, blue whales? What about chickens, sheep, and pigs? Go on a guided tour to see the farm animals on and learn about endangered farm animals.

### **WORKING WITH WOOD**

*3rd through 12th grade. \$3 per participant.*

Wood was a tremendous resource on a farm, used in everything from the family house, to fences around their crops, to chairs they sat in, to tools used on the farm. We will discuss wood as a resource, as well as demonstrate the use of some of the tools that would be used on a farm in the mid-19th century. Try your hand at splitting a rail!

### **HORSE AND OX POWER**

*3rd through 12th grade. \$3 per participant.*

In the days before tractors, horses and oxen provided power to work the land. Discover benefits and limitations of these two animals by observing them and the equipment they use. You will also get a chance to find out how important teamwork and trust are when working with these animals by taking a turn in the harness yourself!

## **The Homeplace Other Groups**

*All programs \$6 Adults & Teens; \$4 Children 4-12yrs.*

### **SHOW & TELL HISTORY**

Discover what daily life on a mid-19th century farm was like by visiting with interpreters at various stops as you tour the farm. You will get a chance to talk about the different roles of people on the farm, discover some of the many uses for the crops and animals raised on the farm, and discover how heavily people depended on natural resources in their daily life.

### **STROLL BACK IN TIME**

Stroll back in time to the mid-19th century with a Homeplace interpreter dressed in period clothing. Enjoy the sights and sounds as you walk the quarter mile around The Homeplace, a representation of a yeoman class family farm in Middle Tennessee. Learn about the buildings, the time, the area, and day-to-day activities of a farm.

### **JUNIOR FARMER (SCOUTS)**

Scouts today use many of the same skills (i.e. tool safety, teamwork, chores, and field work) as the farm family would in the 1850's. The Homeplace Junior Farmer program offers the participants the opportunity to learn some of the essential skills, according to the season, that farm families needed to survive at various locations on the farm. Upon completion of these skills each participant will earn a Homeplace Junior Farmer patch.

## **Nature Station School Groups**

### **NEW IN 2014**

#### **INCREDIBLE INSECTS**

*Pre-K through 6th grade. \$3 per participant.*

Students will get an up-close, hands-on look at several species of insects and other invertebrates. Topics include life cycles, metamorphosis, and distinguishing characteristics of insects. After gaining a new appreciation for these not so creepy crawlies, students will have time to explore Nature

#### **A WALK THROUGH NATURE: SELF-GUIDED BACKYARD TOUR**

*Pre-K through adult. \$3 per participant.*

Step into the world of nature on a self-guided visit to explore our native wildlife exhibits, gardens, and indoor displays. Use your observation skills as you encounter owls, a bald eagle, a bobcat, turtles, and other resident wildlife during your stroll through Nature Station.

#### **TRIPLE CREATURE FEATURE: REPTILE, MAMMAL, AND BIRD, OH MY!**

*Pre-K through adult. \$3 per participant.*

Students will experience up-close encounters with a bird of prey, a reptile, and a mammal. The group leader can choose a theme for the animal encounters: adaptations, habitats, roles in the food chain, or wildlife conservation. This is a good option for large groups (over 80 students) or groups that have limited time.

*More programs continue  
on next page!*

## Nature Station School Groups

### **PUPPET SHOW: THE LORAX**

*Pre-K through 2nd grade. \$3 per participant.*

Dr. Seuss's favorite tale of *The Lorax* will come alive for children during this entertaining puppet show that teaches about the value of trees. Students will also enjoy an up-close encounter with an animal that uses trees, as well as take part in a tree-related activity. Program includes time to explore the Nature Station's live animal exhibits.

### **PUPPET SHOW: ANIMALS OF THE FOREST**

*Pre-K through 2nd grade. \$3 per participant.*

Children will discover the world of the forest and the animals that live there during this engaging program. Through an interactive puppet show, an up-close encounter with a live animal, and more, students will learn about the many animals that live in the forest.

### **PUPPET SHOW: ANIMALS OF THE POND**

*Pre-K through 2nd grade. \$3 per participant.*

Children will discover the world of a pond and the creatures that live there during this engaging program. Through an interactive puppet show, an up-close encounter with a live animal, and more, students will learn about the many animals that live in a pond.

### **BACKYARD SAFARI: SENSORY ADVENTURE**

*K through 2nd grade. \$3 per participant.*

Your senses will come alive as we investigate the world of animals during a guided sensory walk through the backyard wildlife exhibits. Students will smell, touch, look and listen as they discover how both people and animals use their senses.

### **NATURE HIKE: ANIMAL SIGNS & CLUES** (1 mile)

*K through 6th grade. \$4 per participant.*

Your students will use their senses, make observations, and take part in staff-led activities as we explore the trail for animal signs during this 1-mile (or less) hike. We will learn how wildlife survive in their habitat by examining their homes, food remains, tracks, and other clues they leave behind.

## Nature Station School Groups

### **POND PROWL**

*K through 6th grade. \$4 per participant.*

Are you ready to "dip in" and search the wet, the muddy, and the mysterious? Your students will use dip nets and magnifiers to explore life in a pond and learn about the adaptations, behaviors, and life cycles of the tiny creatures that live in this habitat.

### **NATURE HIKE: PLANT PATROL** (1 mile)

*2nd through 6th grade. \$4 per participant.*

Let's go for a guided nature hike to explore the world of plants. Through activities and observations, we will examine the differences among types of plants, their adaptations for survival and reproduction, what the parts of plants do, and how wildlife depend on plants for survival.

### **BACKYARD SAFARI: SECRETS OF SURVIVAL**

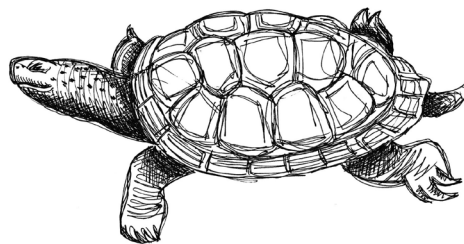
*2nd through 6th grade. \$3 per participant.*

Animals have all the tools they need to protect themselves, find food, and survive within their habitats. Students will observe wildlife in our backyard and learn about the exceptional adaptations many animals use in their survival!

### **IN COLD BLOOD**

*2nd grade through adult. \$3 per participant.*

Enjoy this up-close encounter with live reptiles and amphibians! For younger groups, the program will focus on adaptations, life cycles, and classification. With older groups, we will also explore how environmental changes have affected these animals and learn about their unique behaviors.



*More programs continue  
on next page!*

## Nature Station School Groups

### FINE FEATHERED FRIENDS

*3rd through 6th grade. \$3 per participant.*

Explore bird adaptations during this interactive, hands-on program. Students will meet a live owl while exploring the concept of adaptations. Then, students will work in groups to create their own imaginary bird with adaptations to survive in its habitat. Finally, they will explore the backyard wildlife exhibits by doing an animal adaptations scavenger hunt.

### BACKYARD SAFARI: ANIMALS, ART, AND WRITING

*3rd through 6th grade. \$3 per participant.*

Nature Station wildlife and plants are perfect for creative inspiration! This guided tour of the backyard includes fun language and arts activities. Students will observe, reflect, and communicate by writing and drawing from their experiences.

### BACKYARD SAFARI: WILDLIFE CONSERVATION

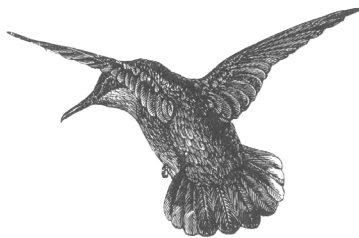
*6th grade through adult. \$3 per participant.*

What is wildlife? What is conservation? How do environmental changes and human activities affect wildlife? As we introduce your students to our resident wildlife, we will explore these questions. Students will develop a greater understanding of how a variety of factors can cause changes to wildlife populations and the ecosystem as a whole.

### CAREER DISCOVERY: NATURAL RESOURCE INTERPRETATION

*High school through adult. \$3 per participant.*

Our job at the Nature Station is “interpretation.” We work to foster understanding, appreciation, and responsible use of the natural resources of Land Between The Lakes. During this tour of our nature center, we will introduce your students to the field of interpretation – its purposes, methods, and role in natural resource management.



## Nature Station Other Groups

*Group Prices for following programs -*

*\$6 Adults/Teens and \$4 Children 4-12yrs*

### WILDLIFE FEATURE: BIRDS

*Ages 6 and up.*

From tiny hummingbirds to bald eagles, let's explore our native birds diversity. Our staff will introduce you to several live birds, including owls, a hawk, and a bald eagle, as we learn about bird adaptations, communication, and migration. We'll also learn to identify different birds by using binoculars.

### WILDLIFE FEATURE: MAMMALS

*Ages 6 and up.*

Let's learn about the group of animals closest to our own heart – mammals! What makes a mammal a mammal? Which mammals live in the wild near you? How can you recognize signs that they are around? Meet some of our native mammals, such as the bobcat, deer, and red wolf, as we discover how these animals survive in the wild and interact with their environment. Have fun as you become a mammal expert!

### WILDLIFE FEATURE: REPTILES AND AMPHIBIANS

*Ages 6 and up.*

Snakes, turtles, salamanders, frogs . . . do you think these critters are awesome or awful? Our staff will show you several live reptiles and amphibians up close. Find out how these unusual creatures survive in the wild and maybe walk away with a better appreciation for them. We'll also teach you how to identify our native species of venomous snakes.

### WILDLIFE FEATURE: RARE & ENDANGERED

*Ages 6 and up.*

Join our staff for a guided tour of some of the wildlife at Nature Station that are either currently rare or have made a comeback in the past, such as the bald eagle, red wolf, and alligator snapping turtle. Discover what makes some animals more prone to becoming endangered, which endangered species live in our area, and how people can help.

### BACKYARD SAFARI: SECRETS OF SURVIVAL

*Ages 7 and up.*

Animals have all the tools they need to protect themselves, find food, and survive within their habitats. Your group will go for a staff-guided tour of the resident wildlife at Nature Station to observe these creatures first-hand and learn about the amazing adaptations they use to survive.

## Nature Station Other Groups

### NATURE HIKE

*Ages 6 and up.*

Let's go for a hike! As we make our way through the woods and to the lakeshore, we will search for clues about the animals and plants that live here. Through activities and observations, scouts will learn about features of the forest ecosystem, such as wildlife signs, common trees, and poisonous plants.

### POND PROWL

*Ages 5 and up.*

Are you ready to "dip in" and search the wet, the muddy, and the mysterious? Your group will use dip nets and magnifiers to explore life in a pond and learn about the adaptations, behaviors, and life cycles of the tiny creatures that live in this unique habitat. *Weather permitting*

## Nature Station Adult Programs

*All Adult Programs \$6 per person*

**HUMMINGBIRDS 101** - From May through August, Nature Station is a haven for hummingbirds. Explore the fascinating lives of these tiny winged wonders and find out how to attract them to your own yard. Also, enjoy watching these beautiful birds as they zip about the Nature Station's backyard gardens. (1½ hour NS visit - includes time to tour the backyard)

**TRULY TALON-TED** - Come face-to-face with several live birds of prey and discover the specialized traits that make these amazing birds such impressive hunters. Get an up-close look at their powerful talons, gorgeous feathers, and sharp eyes as our naturalists introduce you to the Nature Station's resident owls and hawk. (1 to 1½ hour visit - includes time to tour the backyard)

**"INSIDER'S TOUR" OF NATURE STATION**- Join one of Nature Station staff for a guided tour of our resident animals, including the owls, red wolves, bald eagle, and bobcat. Find out the "inside scoop" about them and how they became residents here. Also, learn some fun facts about how these wildlife survive in the wild (1½ hour visit.)

**SIGNS OF THE SEASON HIKE** - Join us for either a 1- or 2-mile hike to explore the signs of the season. We will point out seasonal sights such as songbirds, wildflowers, native trees, and more as we hike along one of the nearby trails.

## Nature Station Birthday Parties

Celebrate your animal-lover's birthday at Nature Station! Our birthday party package includes your choice of one of the staff-led programs listed below, admission for up to 30 guests (additional fee for extra guests), and rental of Nature Station picnic pavilion for 2 hours. We recommend that you plan at least a 1½-hour visit in addition to the time you wish to spend at the picnic pavilion. \$100 flat fee.

**Program Choices** *See descriptions from earlier*

- Puppet Show: Animals of the Forest
- Puppet Show: Animals of the Pond
- Puppet Show: The Lorax
- Triple Creature Feature: Reptile, Mammal, and Bird, Oh My!
- Backyard Safari: Secrets of Survival
- Wildlife Feature: Reptiles and Amphibians
- Wildlife Feature: Birds
- Wildlife Feature: Mammals
- Wildlife Feature: Rare and Endangered



*More programs continue  
on next page!*



## Golden Pond Planetarium

**LITTLE STAR THAT COULD** *\$2.50 per participant.*  
 “Little Star That Could” is a story about an average yellow star in search for planets of his own to protect and warm. Along the way, he meets other stars, learns what makes each star special, and discovers that stars combine to form star clusters and galaxies. Eventually, Little Star finds his planets. Each planet is introduced to the audience with basic information about our Solar System. Program time - 35 minutes plus interpretive presentation.

**EARTH, MOON, & SUN** *\$2.50 per participant.*  
 This show explores the relationship between the Earth, Moon and Sun with the help of Coyote, an amusing character adapted from Native American oral traditions who has many misconceptions about our home planet and its most familiar neighbors. Learn why the Sun rises and sets and the basics of fusion and solar energy. Examine the Moon’s orbit, craters, phases and eclipses. Also, explore past and future space travel to our Moon and beyond. Program time - 25 minutes plus interpretive presentation.

**SKIES ABOVE** *\$2.50 per participant.*  
 An interpretive program presenting what is visible in the night sky. The visitor will learn what constellations are visible during the current season. They will also learn about planets, the moon, and other objects that may be visible. This is a very informative and fun program for all ages. All dome presentation. Program time - 45 minutes.

**IBEX: SEARCH FOR EDGE OF SOLAR SYSTEM**  
*\$2.50 per participant.*  
 This program follows the creation of NASA’s Interstellar Boundary Explorer. Audiences will get an in-depth look at the mission and how IBEX is collecting high-speed atoms to create a map of our Solar System’s boundary. Narrated by two inquisitive teenagers, audiences will hear from the scientists and engineers that developed the IBEX mission and created the spacecraft, and get the latest updates on the mission’s discoveries. They will also learn about the discoveries of Galileo, Huygens, Newton, Hubble and many others. Full dome presentation. Program time - 31 minutes plus interpretive presentation.

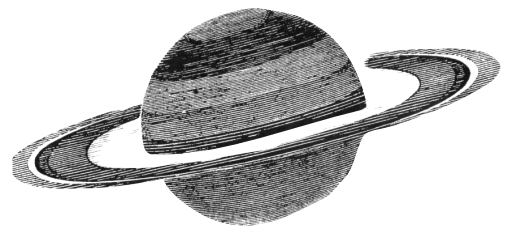
## Golden Pond Planetarium

**TWO SMALL PIECES OF GLASS** *\$2.50 per participant.*  
 While attending a local star party, two teenage students learn how the telescope has helped us understand our place in space and how telescopes continue to expand our understanding of the Universe. They also learn about the discoveries of Galileo, Huygens, Newton, Hubble and many others. Program time - 25 minutes plus interpretive presentation.

**LEGENDS OF THE NIGHT SKY** *\$2.50 per participant.*  
 Join Aesop the owl and Socrates the mouse for a light-hearted and imaginative look at the myths and stories associated with the constellations. This show features the mighty warrior Perseus, the beautiful princess Andromeda and Cetus, the terrible sea monster. Program time - 30 minutes.

**BACK TO THE MOON FOR GOOD**  
*\$2.50 per participant.*  
 Immerse yourself in a race to return to the Moon 40 years after the historic Apollo landings. See how a competition among privately funded international teams is ushering in a new era of lunar explorations and learn about the Moon’s resources. Program time - 30 minutes.

**WILDEST WEATHER**  
*\$2.50 per participant.*  
 Join National Geographic on a spectacular journey to witness the most beautiful, powerful, and mysterious weather phenomena in the solar system. Program time - 30 minutes.



## Correlations to the Kentucky Core Content for Assessment

Our school programs are correlated to the Kentucky Core Content Standards. While the general content of each program remains consistent, the interpreter assigned to the program has the freedom to adapt activities to best meet needs of the school group. For this reason, an exact match of a particular standard may not be met.

### The Homeplace Group Programs

#### SHOW & TELL HISTORY (K-2)

SS-EP-2.3.1	SS-EP-4.4.1	SS-EP-5.1.1	SS-EP-5.2.3
SS-04-4.4.1	SS-04-5.1.1	SS-04-5.2.3	SS-05-4.4.1
SS-05-5.1.1	SS-05-5.2.3	SS-06-2.2.1	SS-06-5.1.1
SS-07-2.2.1	SS-07-5.1.1	SS-08-2.2.1	SS-08-5.1.1
SS-08-5.2.4	SS-HS-2.2.1		

#### TOYS AND GAMES (K-2)

SS-EP-2.1.1	SS-EP-2.3.1	SS-EP-5.1.1	
-------------	-------------	-------------	--

#### CHILDREN'S CHORES (K-2)

SS-E-1.3.1	SS-E-5.1.1	SS-E-5.2.3	
------------	------------	------------	--

#### SPINNING WOOL (K-6)

SS-EP-3.4.1	SS-EP-4.4.1	SS-EP-5.1.1	SS-04-3.4.1
SS-04-4.4.1	SS-04-5.1.1	SS-05-3.4.1	SS-05-4.4.1
SS-05-5.1.1	SS-06-5.1.1		

#### A WALK WITH THE ANIMALS: Endangered Animals? (3-12)

SC-EP-4.6.1	SC-04-4.6.1	SC-05-3.5.1	SC-06-3.5.1
SC-07-3.5.1			

#### WORKING WITH WOOD (3-12)

SS-EP-3.1.1	SS-EP-4.3.2	SS-EP-5.1.1	SS-04-3.1.1
SS-04-4.3.2	SS-04-5.1.1	SS-05-3.1.1	SS-05-4.3.2
SS-05-5.1.1			

#### HORSE AND OX POWER (3-12)

SC-05-3.5.1	SC-05-4.6.1	SC-06-3.4.2	SC-06-3.5.1
-------------	-------------	-------------	-------------

### Nature Station Group Programs

#### A WALK THROUGH NATURE: Self-guided Tour of the Backyard (K-12)

SC-EP-3.4.1	SC-EP-3.4.3	SC-EP-4.6.1	SC-EP-4.7.1
SC-04-3.4.1	SC-04-4.6.1	SC-04-4.7.1	SC-05-3.5.2
SC-05-3.5.1	SC-06-3.5.1	SC-07-3.5.1	

#### ANIMALS OF THE FOREST (pre-K-2)

SC-EP-3.4.1	SC-EP-4.6.1		
-------------	-------------	--	--

#### ANIMALS OF THE POND (pre-K-2)

SC-EP-3.4.1	SC-EP-3.4.4	SC-EP-4.6.1	
-------------	-------------	-------------	--

#### BACKYARD SAFARI: Sensory Adventure (K-2)

SC-EP-3.4.1	SC-EP-3.4.2	SC-EP-3.4.3	
-------------	-------------	-------------	--

#### NATURE HIKE: Animal Signs & Clues (K-6)

SC-EP-3.4.1	SC-EP-4.6.1	SC-EP-4.7.1	SC-04-3.4.1
SC-04-4.6.1	SC-05-4.7.1		

#### NATURE HIKE: Plant Patrol (2-6)

SC-EP-3.4.1	SC-EP-3.4.3	SC-EP-4.6.1	SC-04-3.4.1
SC-04-4.6.1	SC-05-3.4.1	SC-05-3.5.1	SC-05-4.7.1

#### POND PROWL (K-6)

SC-EP-3.4.1	SC-EP-3.4.2	SC-EP-3.4.3	SC-EP-3.4.4
SC-04-3.4.1	SC-04-3.4.2	SC-04-3.4.3	SC-05-4.7.1

#### BACKYARD SAFARI: Secrets of Survival (2-6)

SC-EP-3.4.1	SC-EP-3.4.2	SC-EP-3.4.3	SC-04-3.4.1
SC-04-3.4.2	SC-05-3.4.1	SC-05-3.5.1	

#### IN COLD BLOOD (2-adult)

SC-EP-3.4.1	SC-EP-3.4.2	SC-EP-3.4.3	SC-EP-3.4.4
SC-04-3.4.1	SC-04-3.4.2	SC-04-3.4.3	SC-05-3.4.1
SC-05-3.5.1	SC-05-3.5.2	SC-06-3.4.2	SC-06-4.7.1
SC-08-3.4.4	SC-HS-3.4.7	SC-HS-3.5.2	SC-HS-4.7.1

#### BACKYARD SAFARI: Web of Life (3-6)

SC-EP-3.4.1	SC-EP-3.4.3	SC-EP-4.6.1	SC-04-3.4.1
SC-04-4.6.1	SC-05-4.7.1		

#### BACKYARD SAFARI: Animals, Art, & Writing (3-6)

WR-E-1.1.0	WR-E-4.7.0	WR-E-4.8.0	AH-04-4.4.1
AH-04-4.4.2	AH-05-4.4.1	AH-05-4.4.2	WR-M-1.1.0
WR-M-4.7.0	WR-M-4.8.0	AH-06-4.4.1	AH-06-4.4.2

#### FRESHWATER ECOLOGY (5-adult)

SC-05-3.5.1	SC-05-4.7.1	SC-05-4.7.2	SC-06-4.7.1
SC-07-4.7.1	SC-08-3.4.4	SC-08-4.7.1	SC-HS-3.5.2
SC-HS-4.7.1			

#### BACKYARD SAFARI: Wildlife Conservation (6-adult)

SC-06-4.7.1	SC-07-4.7.1	SC-07-3.5.1	SC-08-4.6.5
SC-08-4.7.1	SC-HS-3.5.2	SC-HS-4.7.1	SC-HS-4.7.2

#### CAREER DISCOVERY: Natural Resource Interpretation (9-Adult) N/A

### Planetarium Group Programs

#### EARTH, MOON, & SUN

SC-E-2.2.2	SC-P-EU-U-3	SC-P-EU-U-7	
SC-M-2.3.2	SC-E-2.2.3	SC-P-EU-U-4	
SC-04-2.3.4	SC-EP-2.3.4	SC-P-EU-U-5	
SC-04-2.3.5	SC-EP-2.3.5	SC-P-EU-U-6	SC-06-2.3.1

#### THE LITTLE STAR THAT COULD

SC-E-1.1.1	SC-M-2.3.1	SC-E-1.1.3	SC-05-2.3.5
------------	------------	------------	-------------

#### IBEX-INTERSTELLAR BOUNDARY EXPLORER

SC-08-1.1.2	SC-H-1.1.1	SC-HS-2.3.5	SC-HS-1.1.2
-------------	------------	-------------	-------------

#### TWO SMALL PIECES OF GLASS

SC-04-4.6.4	SC-M-2.3.1	SC.4STM-U-5	
SC-7-EU-U-2	SC-05.2.3.5	SC-HS-2.3.2	
SC-5-EU-U-6	SC-7-STM-U-5	SC-05-4.6.4	
SC-HS-2.3.5	SC-5-EU-S-7	SC-7-MF-4	
SC-06.2.3.1	SC-4-BC-U-2/U3/S-4	SC-5-EU-S-8	
SC7-MF-S-9	SC-7-BC-U-4		

#### SKIES ABOVE

SC-05-2.3.5	SC-07-4.6.1	SC-M-2.3.2	
SC-HS-2.3.3	SC-06-2.3.1	SC-08.2.3.4	
SC-HS-1.3.4	SC-HS-2.3.5	SC-07-2.3.3	
SC-M-2.3.1	SC-HS-2.3.2	SC-HS-4.4.2	

#### BLOWN AWAY

SC-04-2.3.3	SC-05-2.3.5	SC-07-2.3.3	
SC-HS-4.6.2	SC-05-2.3.1	SC-06-2.3.1	
SC-07-4.6.1	SC-HS-4.6.9	SC-05-2.3.3	
SC-06-4.6.1	SC-07-4.6.3	SC-HS-4.7.3	
SC-05-2.3.4	SC-06-4.6.2	SC-08-4.7.2	

#### LEGENDS OF THE NIGHT SKY – ORION / PERSEUS & ANDROMEDA

SS-E-2.1.1	SS-E-2.1.2		
------------	------------	--	--

#### WILDEST WEATHER IN THE SOLAR SYSTEM

SC-5-EU-1	SC-5-EV-U-3	SC-5-EV-U-5	SC-5-EV-U-6
SC-5-EU-S-6	SC-5-EU-U-6	SC-6-EU-U-4	SC-E-2.2.2

#### BACK TO THE MOON FOR GOOD

SC-5-EU-U-5	SC-5-EU-U-6	SS-E-5.2.3	SS-7-HP-U-4
SS-8-HP-U-5			

## Correlations to the Tennessee Curriculum Standards

Our school programs are correlated to the Tennessee Curriculum Standards. While the general content of each program remains consistent, the interpreter assigned to the program has the freedom to adapt activities to best meet needs of the school group. For this reason, an exact match of a particular standard may not be met.

### The Homeplace Group Programs

#### SHOW & TELL HISTORY (K-12) Social Studies:

K.2.01 a,b	1.3.03 a, b	1.5.02 a	3.1.02 b	3.5.02 a,b
4.3.02 b	4.3.04 b	5.3.02 b	6.1.03 a	7.1.03 a
7.3.08 c	8.3.04 b			

#### TOYS AND GAMES (K-2) Social Studies:

K.1.01 b,c	K.6.01 d	1.1.01 c
------------	----------	----------

#### CHILDREN'S CHORES (K-2) Social Studies:

K.2.03 a	K.4.03 b	K.5.02 a	1.4.03 b	1.5.02 a
1.6.01 b	2.5.02 b	2.6.01 a		

#### SPINNING WOOL (K-6) Social Studies:

3.2.01 a
----------

#### A WALK WITH THE ANIMALS: Endangered Animals? (3-12) Science:

3.5.1	3.5.2	4.6.2	6.5.1
-------	-------	-------	-------

#### WORKING WITH WOOD (3-12) Social Studies:

4.3.04 b	5.3.02 a,b	6.1.03 b	7.1.03 c	
Science:	4.10.1	4.10.3	5.10.1	5.10.3

#### HORSE AND OX POWER (3-12) Science:

8.10.4 a	3.11.1 a,b	4.11.2 b	5.11.2 a,c
----------	------------	----------	------------

#### A WALK WITH THE ANIMALS: Endangered Animals ? (3-12) Science:

8.5.2 b
---------

### Nature Station Group Programs

#### A WALK THROUGH NATURE: Self-guided Tour of the Backyard

(K-12) K-8 Science:

K.5.2	1.2.3	1.5.1	1.5.2	2.3.1
2.5.1	2.5.2	3.2.3	3.5.2	4.2.1
4.3.1	4.6.2	5.2.1	6.2.2	6.5.1
6.6.3				

#### ANIMALS OF THE FOREST (pre-K-2) K-8 Science:

K.5.2	1.2.3	1.3.1	1.5.2	1.10.2
2.2.3	2.3.1	2.5.2		

#### ANIMALS OF THE POND (pre-K-2) K-8 Science:

K.5.2	1.2.3	1.3.1	1.5.2	2.2.3
2.4.2	2.5.2			

#### BACKYARD SAFARI: Sensory Adventure (K-2) K-8 Science:

K.2.2	K.5.2	1.2.2	1.2.3	1.3.1
2.2.2	2.2.3			

#### NATURE HIKE: Animal Signs & Clues (K-6) K-8 Science:

K.5.2	1.2.2	1.2.3	2.2.2	2.2.3
3.2.3	3.3.1	4.2.1	4.2.2	4.3.1
5.2.1	6.2.2	6.3.1		

#### NATURE HIKE: Plant Patrol (2-6) K-8 Science:

2.2.3	2.3.1	2.4.1	3.2.3	3.3.1
3.3.2	3.5.1	3.5.2	4.2.1	5.2.1
5.3.1	5.3.2	5.5.1	6.3.1	6.5.1

#### POND PROWL (K-6) K-8 Science:

K.5.2	1.1.1	1.2.3	1.3.1	1.5.1
1.5.2	2.2.3	2.3.1	2.4.2	3.2.3
3.4.3	3.5.2	4.2.1	4.4.3	4.5.1
5.2.1	6.2.2	6.3.1	6.5.1	

#### BACKYARD SAFARI: Secrets of Survival (2-6) K-8 Science:

2.2.2	2.5.1	2.5.2	3.2.3	3.3.1
3.5.2	4.3.1	4.5.1	4.6.2	6.5.1
6.6.3				

#### IN COLD BLOOD (2-adult) K-8 Science:

2.2.2	2.5.1	2.5.2	3.4.3	3.5.2	4.4.3	4.5.1
6.2.2	6.5.1	6.6.3	8.5.2			
HS Life Science:	2.7	HS Biology I:			2.6	
HS Biology II:	1.2	HS Environmental Science:	1.5	1.6		
HS Ecology:	1.5	1.6				

#### BACKYARD SAFARI: Web of Life (3-6) K-8 Science:

3.2.3	3.3.1	4.2.1	4.3.1	4.6.2	5.2.1	5.3.1
6.2.2	6.3.1	6.6.3				

#### BACKYARD SAFARI: Animals, Art, & Writing (3-6) K-8 English (Writing):

3.2.02	3.2.09	4.2.02	4.2.09	5.2.02	5.2.09	6.2.02
6.2.10						
K-8 Visual Art:	Grade 3: 1.2	Grade 3: 2.4	Grade 3: 6.2			
Grade 4: 1.2	Grade 4: 2.4	Grade 4: 6.2	Grade 5: 1.2			
Grade 5: 2.3	Grade 5: 6.2	Grade 6: 2.2				

#### FRESHWATER ECOLOGY (5-adult) K-8 Science:

5.2.1	5.2.2	6.2.2	6.5.1	8.5.2
HS Life Science:	2.2	2.4	2.7	
HS Biology I:	2.5	2.6		
HS Ecology:	1.1	1.5	6.2	
HS Environmental Science:	1.1	1.5	6.2	
HS Scientific Research:	3.4			

#### BACKYARD SAFARI: Wildlife Conservation (6-adult) K-8 Science:

6.2.2	6.5.1	6.6.3	8.10.3	HS Life Science:	2.7
HS Biology I:	2.4	2.6			
HS Ecology:	1.5	1.6	3.2	6.2	
HS Environmental Science:	1.5	1.6	3.2	6.2	

#### CAREER DISCOVERY: Natural Resources Interpretation (9-Adult) N/A Relevant to Forestry and Wildlife Management CTE courses

### Planetarium Group Programs

#### EARTH, MOON, & SUN

GLE – 0107.6.2	GLE – 0407.6.1	GLE – 0607.6.7
GLE – 0007.6.2	GLE – 0407.6.2	CLE – 3204.1.9
GLE – 0207.6.1	GLE – 0607.6.3	GLE – 0207.6.2 GLE – 0607.6.4

#### LITTLE STAR THAT COULD

GLE – 0007.6.1	GLE – 0307.6.1	GLE – 0307.6.2
----------------	----------------	----------------

#### IBEX – INTERSTELLAR BOUNDARY EXPLORER

CLE – 3202 Inq.1	CLE – 3204 Inq.1	CLE – 3204.1.2
CLE – 3202 T/E.4	CLE – 3204 Inq.3	

#### TWO SMALL PIECES OF GLASS

GLE – 0307 Inq.1	GLE – 0407 T/E.2	GLE – 0507 T/E.4
GLE – 0807 T/E.2	GLE – 0307 Inq.5	GLE – 0407 T/E.3
GLE – 0607 T/E.2	GLE – 0807 T/E.3	GLE – 0307 Inq.6
GLE – 0407 T/E.4	GLE – 0607 T/E.3	GLE – 0307.6.1
GLE – 0407 T/E.5	GLE – 0607.6.1	GLE – 0407 Inq.1
GLE – 0407.10.2	GLE – 0707 T/E.2	GLE – 0407 Inq.2
GLE – 0507 Inq.1	GLE – 0707 T/E.3	GLE – 0407 T/E.1
GLE – 0507 T/E.1	GLE – 0707 T/E.4	

#### SKIES ABOVE

5.7.1	5.7.2	5.11.1	6.7.1	6.7.2	6.7.3	6.7.4
8.11.1	8.11.3					

#### BLOWN AWAY

4.7.2	5.8.2	7.8.1	4.8.1	5.8.3	7.8.2	4.8.2
6.7.3	7.8.3	5.7.2	6.14.1	7.8.4	5.8.1	6.14.2 8.10.3

#### LEGENDS OF THE NIGHT SKY – ORION / PERSEUS & ANDROMEDA

K.1.03.b	1.1.03.b
----------	----------

#### WILDEST WEATHER IN THE SOLAR SYSTEM

GLE-0507.6.1	GLE-0607.6.2	GLE-3204.1.2
--------------	--------------	--------------

#### BACK TO THE MOON FOR GOOD

GLE-0407.6.1	GLE-0607.6.4	GLE-3204.1.4
--------------	--------------	--------------

# More field trip opportunities in the local area!

## Cross Creeks National Wildlife Refuge

[www.fws.gov/crosscreeks](http://www.fws.gov/crosscreeks)

Dover, TN

A group visit to the refuge can be scheduled by calling 931-232-7477. A visitor center and restrooms are available.

## Tennessee National Wildlife Refuge

[www.fws.gov/tennesseerefuge](http://www.fws.gov/tennesseerefuge)

Paris, TN

Schedule a refuge field trip by calling 731-642-2091. Other educational resources, including "critter crates," are also available. A new visitor center just opened in 2014.

## Lake Barkley Dam Visitor Center

Grand Rivers, KY

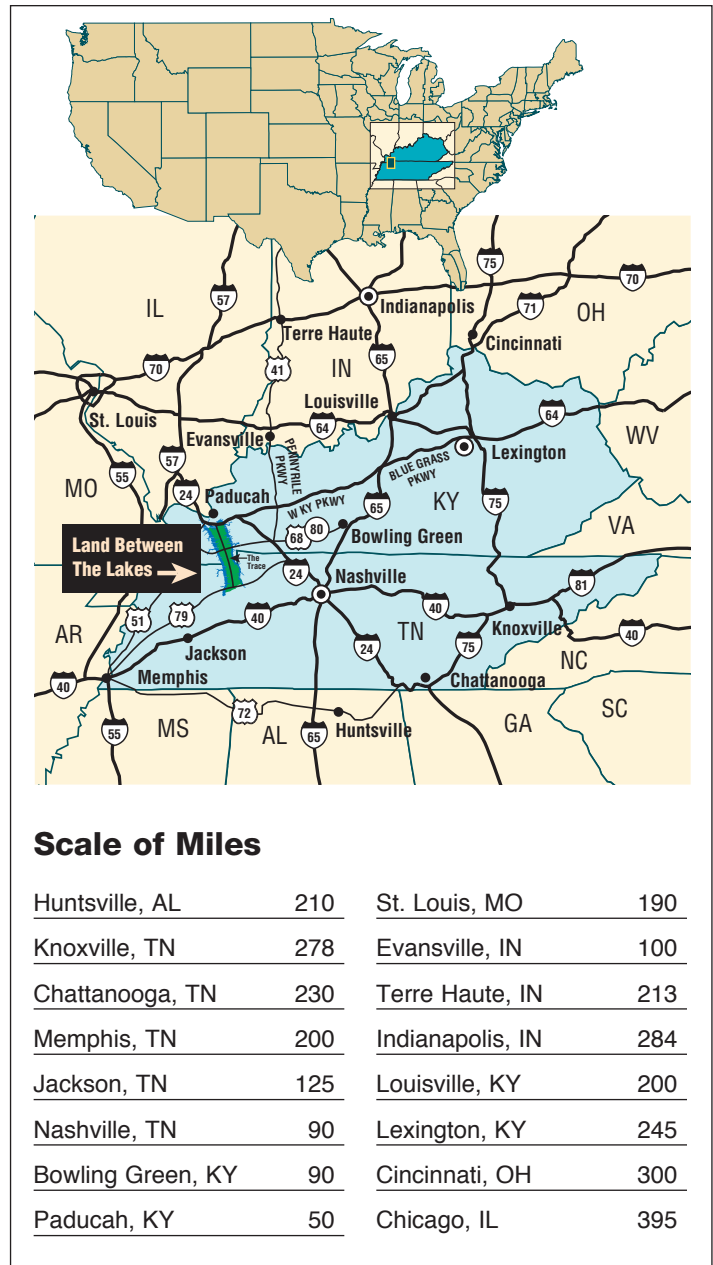
Self-guided tours of the visitor center can be scheduled; guided tours of the Barkley Lock and Dam may be available on a limited basis. Make arrangements by calling 270-362-4236.

## Fort Donelson National Battlefield

[www.nps.gov/fodo](http://www.nps.gov/fodo)

Dover, TN

Schedule a ranger-guided tour or an interpretive program to better understand this Civil War Battlefield. Other educational opportunities consist of off-site programs conducted by Fort Donelson rangers and a traveling trunk program. Call 931-232-5706 for more information.



For more information:

**270-924-2020**

**1-800-LBL-7077**

**lblinfo@fs.fed.us**

Visit [www.landbetweenthelakes.us](http://www.landbetweenthelakes.us)



United States  
Department of  
Agriculture Forest  
Service

USDA Forest Service  
Land Between The Lakes  
100 Van Morgan Drive  
Golden Pond, KY 42211-9001